

Accuracy: +/- 0,5 %
Flow range from 12 l/h to 14 m3/h
Accuracy consistency
Entirely tight system : no environmental impact
Less maintenance
No need for live material trial
Few wearing parts
Manual or automatic refill



DOSING :
Ground Slag, Anhydrite,
Silicium Fumes, Coke fines,
Plaster, Starch, Filter Dust,
Cement, lime, etc.

RBP



- ✓ Horizontal stirrer in lower part that ensures material homogeneity. (Option: vertical stirrer for bad flowing products)
- ✓ Bearing at screw outlet for a better centering in the tube (less cantilever).
- ✓ Enforced tightness by glands, chicanes, and 4 teflon braids.
- ✓ Inspection door in lower part for eventual replacement of horizontal stirrer without dismantling the whole feeder.
- ✓ Execution: Steel S235-JRG2, stainless steel 304 and 316

Function:

The Loss-In-Weight feeders work using the principle of controlled lightening. The hopper with its extraction device (screw) is installed on a weighing system giving continuously to the controller the measure of weight. The loss of weight by time unit (measuring sampling time) represents the actual proportioning flow rate.

Regulation:

The controller compares the actual measured flow to the setpoint and calculates the drive command signal to be sent to the screw speed controller. The corrective actions made are saved and reflect the volumetric behaviour of the system.

Refill:

The continuous measure of weight in the hopper allows, according to two configurable thresholds (high and low), to manage the refill system(s) feeding the hopper. During this refill phase, the screw speed is controlled according to its volumetric efficiency, memorized during the previous controlled emptying phase(s).

Controller:

The flowrate at the feeder discharge point is maintained constant by electronic controller SCM2* at the setpoint value.

Detailed alarm informations are obtained via the display (SDU)

* SCM2: Field or Panel version:
doc : SCM2-F.260.001-E.b or SCM2-P.260.001-E.b



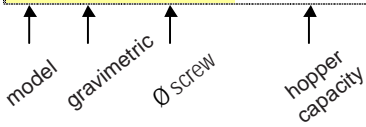
Options:

Vertical stirrer	Forced fan P>0,55 kW
Inlet counter flange	Support feet
Outlet counter flange	Junction box for motor
High level probe	Feeding gate
Digital load cells	

ATEX Version

Feeding examples:

(~ 10 time of the max flow rate)
Gravitational
Vibrating float,
Fluidized float
Flow control gate,
Archimedean screw,
"Big bag" emptying station, etc.

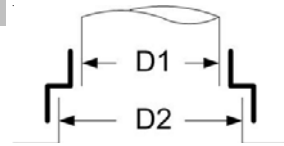
Dimensions and flow range
RB P 34 - 68 100 - 250

Dimensions / Weight

Hopper capacity	Dim. "A" (mm)	Total feeder weight
100 l.	706	~ 247 kg
150 l.	827	~ 251 kg
250 l.	1092	~ 260 kg

Weight of frame : 57 kg

Inlet bellows

Ø Inlet	D1	D2
Ø 150	156	206
Ø 200*	206	256

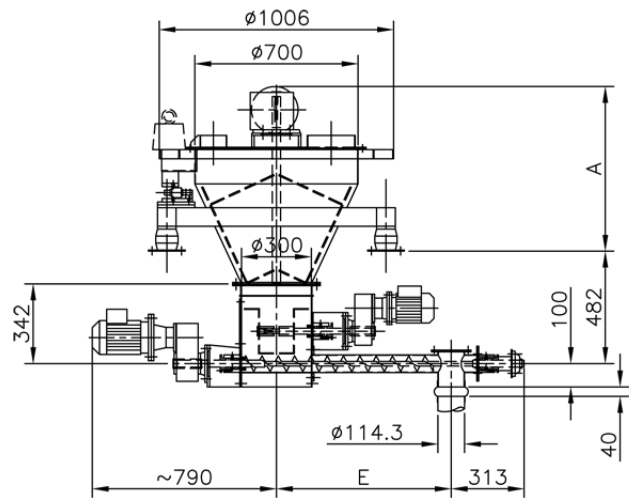
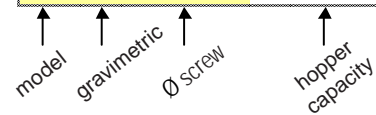
 D1 : Ø outlet feeding system
 D2 : Ø inlet weighing hopper RBP
 * : except with vertical stirrer

Theoretical values of flow rate

Ø screw	Max Flow in dm ³ /h	Min Flow in dm ³ /h	Screw speed max./min. (rpm)	Distance inlet / outlet (screw)			
				Dimension "E" (mm)			
Ø 34	500	12	408 / 10	550	650	-	-
Ø 52	1200	47	256 / 10	550	650	750	-
Ø 68	3100	120	257 / 10	-	-	750	850

Flow range : 10 to 100% of nominal

If flow <100 kg/h : SFT loadcells

Screw filling ratio : 90 %

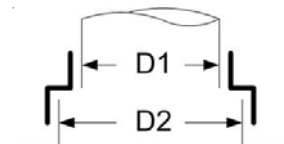

RB P 80 - 150 250 - 1000

Dimensions / Weight

Hopper capacity	Dim. "A" (mm)	Total feeder Weight
250 l.	788	~ 385 kg
500 l.	1116	~ 419 kg
750 l.	1446	~ 443 kg
1000 l.	1776	~ 467 kg

Weight of frame : 90 kg

Inlet bellows

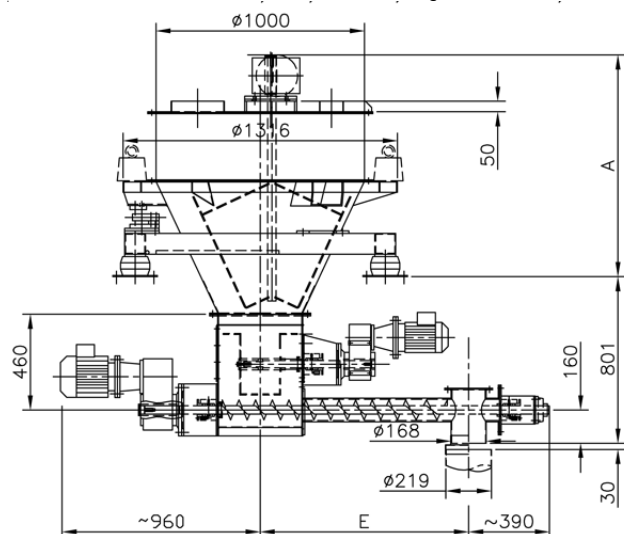
Ø Inlet	D1	D2
Ø 150	168,3	206
Ø 200	219,1	256
Ø 300	323,9	356

 D1 : Ø outlet feeding system
 D2 : Ø inlet weighing hopper RBP

Theoretical values of flow rate

Ø screw	Max Flow in dm ³ /h	Min Flow in dm ³ /h	Screw speed max./min. (rpm)	Distance inlet / outlet (screw)			
				Dimension "E" (mm)			
Ø 80	4000	200	197 / 10	800	1000	-	-
Ø 100	7000	430	163 / 10	800	1000	1200	-
Ø 125	10000	810	123 / 10	-	1000	1200	1400
Ø 150	14000	1400	98 / 10	-	1000	1200	1400

Flow range : 10 to 100% of nominal

Screw filling ratio : 90 %


HASLER International SA
 Z.I. de L'Abbaye
 F-38780 Pont-Evêque France
 Tel. +33 (0)4 74 16 11 50
 Fax +33 (0)4 74 16 11 55
 E-mail: sales.fr@hasler-int.com

HASLER Deutschland GmbH
 Münsterstrasse 69
 D-49525 Lengerich Germany
 Tel. +49 (0)5481 805-0
 Fax +49 (0)5481 805-110
 E-mail: sales.de@hasler-int.com

HASLER Suisse Sàrl
 Rue du Puits-Godet 10a
 CH-2000 Neuchâtel Switzerland
 Tel. +41 (0)32 720 23 00
 Fax +41 (0)32 720 23 90
 E-mail: sales.ch@hasler-int.com

**HASLER Industrial Equip
 Shanghai Co. Ltd**
 541 Deli Road - Malu Town
 Jiading District
 CN - 201801 Shanghai P.R. China
 Tel. +86 21 5910 6058
 Fax +86 21 5910 5300
 E-mail: sales.cn@hasler-int.com